

# Christie's Carousel of Learning

LEARNING

Day Care Hours  
7:30 a.m. – 5:30 p.m.

Part Time Care  
7:30 a.m. – 12:30 p.m.  
1:00 p.m. – 5:30 p.m.

Preschool Hours  
9:00 a.m. -11:30 a.m.  
Lunch 12:00 to 12:30 p.m.  
1:00 p.m. – 3:30 p.m.

1-847-825-4568



WEB SITE: [www.christiescarousel.com](http://www.christiescarousel.com)

E-MAIL: [info@christiescarousel.com](mailto:info@christiescarousel.com)

FAX: 1-847-825-4320

## Information to follow...

## Christie's Carousel of Learning Welcomes You!

Welcome and thank you for your interest in Christie's Carousel of Learning Preschool/Day Care. We would like to introduce ourselves. We are Jan Christie Pagone, Judy Christie Fritz and Nancy Christie Gobbo. We are sisters that have been operating this school for thirty years and are very happy to be able to provide a wonderful program to the children of Park Ridge and the surrounding communities. We offer a variety of hour, along with the flexibility to choose what days are best suited for your schedule.

Our Summer Day Camp program consists of nine fun and adventurous weeks! What is great about our Summer Day Camp program is that you can choose whichever weeks you would like your child to attend. You can also register your child for different days and different times within those weeks. We always look forward to new and returning students attending our summer camp, since the ages of the children vary between two and nine years of age. Enclosed you will find an outline of each week's theme along with some of the many activities that will take place within each week.

Our Fall school year program is from August until June. Children are assigned to classrooms according to their age. The school year differs from the summer day camp because the days and times that you choose to enroll your child remain the same throughout our fall school calendar. Enclosed you will find more information regarding our daily schedule, along with some examples of the goals we set for each age group.

We also offer an extended kindergarten day enrichment program.  
Details enclosed.

The information in this packet should be helpful and provide you with answers to questions. We are always available to discuss any additional questions you may have. We would like to invite you to take a tour of our facility. We believe you will find the atmosphere and environment welcoming and suitable to provide your child with the best educational experience.

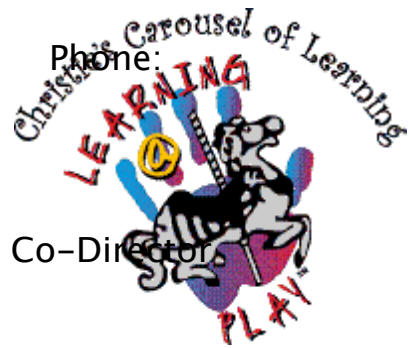
Please let us know if we can provide you with any further assistance:

E-mail [info@christiescarousel.com](mailto:info@christiescarousel.com)

847-825-4568.

Thank you,

Jan Christie Pagone: Director, Judy Christie Fritz: Co-Director,  
and Nancy Christie Gobbo: Teacher/ Supervisor



# **CHRISTIE'S CAROUSEL OF LEARNING**

## **Family Operated OPEN ALL YEAR ROUND**

**We'd like to share with you a few unique qualities that our school has to offer!**

### **PHILOSOPHY**

**Since opening our preschool/day care in 1981, our philosophy has been and will continue to be based on our concept of family love.**

**Georgia & Gene Christie along with their nine children started the school with the idea of providing a loving, caring, enjoyable environment for both the children and parents.**

**Success in social adjustment in an intellectually stimulating environment establishes the necessary physiological format for each child to cope with a structured educational environment upon entering the Elementary Educational mainstream.**

**Our curriculum encourages play as the child's most appropriate tool for learning. We understand the importance of play to children's development by providing opportunities for both structured and spontaneous activities in our program.**

**Coming from a family of nine we recognize the importance of each child developing their own unique personality. Each child may grow intellectually at their own pace by providing an environment that encourages the development of a positive self-esteem.**

## CHRISTIE'S CAROUSEL OF LEARNING

Thank you for inquiring about our pre-school/day care. Your interest in our program is very important to us. We have enclosed our school brief, calendar, and tuition schedule. We have listed below some questions that are frequently asked, however, if you have any other questions please feel free to call or stop by to see us.

- 1) What ages must the children be to attend school?

They must be 2-6 years of age for the Fall Program & 2-9 in our Summer Program. We do not have a kindergarten program during the school year, however, kindergarten age children are welcome to attend our Summer Day Camp program! They can also join us in our kindergarten extended day program!

- 2) Do the children need to be potty trained?

No, but they must be in training pants. Not pull-ups or diapers.

- 3) Do the children need to attend the same days each week?

Yes, they must stay consistent with the 2, 3, 4, or 5 days you choose when registering. All times must be the same for all the days registered.

- 4) When can I come visit your school?

You are welcome anytime between 7:30a.m. - 5:30p.m. Monday - Friday to observe any age group. Preschool classes are going on between 9-11:30a.m. & 1-3:30p.m. For tours, the director is usually always available, however, you might want to call ahead to be sure we haven't scheduled a field trip, etc.

- 5) Do you have availability now?

You can call the school and contact Jan, Judy or Nancy to find our exact days and times that are available. Any days quoted over the phone are always filled on a first come, first serve basis.

- 6) How do I register for the upcoming Summer Program and/or Fall Program?

You may register for the Summer and Fall Programs at the same time or Summer only or Fall only at our Open registration. Our procedure for registration is as follows:

- A) The families currently enrolled register first.
- B) We then open up registration to the public on a first come, first serve basis according to availability.

7). What do you teach the children on a daily basis?

Each teacher has a curriculum she they follows for the school year. We feel the best way for you to understand our program is by coming in with or without your child and observing any of our classrooms.

8). What are the class sizes?

The teacher/child ratio according to the DCFS are one teacher with eight two-year-olds and one teacher with ten three/four/five/six-year-olds.

9). Are you Licensed?

Yes, we are licensed by the Department of Children and Family Services, and must follow the state guidelines which are kept on file at our school. Also refer to the Summary of Licensing Standards For Day Care Centers available at the school.

We hope this has answered some of your questions and we encourage you to stop by to visit the school anytime. Please call if you have any questions & once again thank you for your interest in our school!

Sincerely yours,  
The Christie Family

# **CHRISTIE'S CAROUSEL OF LEARNING**

## **REGISTRATION 2011**

All families currently enrolled in school will be able to register for our Summer 2011 and Fall 2011-2012 programs. We will be accepting registration via e-mail in the order that they are received.

**Date: Tuesday, January 11, 2011**

**Time: 7:30am (accepting applications starting at this time)**

### **Summer 2011 Day Camp: Ages 2-9**

The Summer program is from June 12, 2011-August 12, 2011. You may choose any or all 9 weeks. The days and times for each week may be the same or different.

### **Fall 2011-2012: Ages 2-6**

The Fall program is from August 15, 2011-June 8, 2012. Once your child's days and times are confirmed you may always request to add to the schedule, if available, but you may NOT drop any day/days or shorten the hours you originally enrolled for.

**Siblings of children currently enrolled:** you may register them at the same time.

**We CANNOT accept anyone's registration earlier than 7:30a.m. January 11<sup>th</sup>.**

**Tell your friends that public registration begins on Wednesday, January 12, 2011<sup>th</sup>.**

### **REGISTRATION PROCEDURE:**

Summer registration form-complete and return (if applicable)

Fall Registration form-complete and return (if applicable)

Registration Fees: Summer 2011 = \$30.00 per child

Fall 2011-2012 = \$60.00 per child

(These fees are non-refundable and do not apply towards tuition.)

**YOUR FALL REGISTRATION FEE WILL ONLY HOLD YOUR CHILD'S ENROLLMENT SPACE UNTIL JUNE 1<sup>st</sup>, 2011. AT THIS TIME YOUR 1<sup>ST</sup> 4-WEEK FALL 2011-2012 TUITION PAYMENT IS DUE. YOUR CHILD'S SPACE WILL BE RELINQUISHED IF TUITION IS NOT RECEIVED BY 5:30P.M. JUNE 1<sup>st</sup>, 2011. THIS TUITION APPLIES TO THE FIRST TWO WEEKS OF SCHOOL AND THE LAST TWO WEEKS OF SCHOOL. No refunds for Tuition, Withdrawals, or Registration Fees.**

Registration fees will be due once your child's days and times are confirmed.

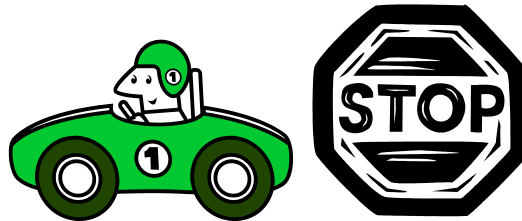
# Christie's Carousel of Learning Summer 2011



Week #1 June 13-June 17

## MCQUEEN MATCH CAR RACING

- Outdoor Safety Town
- Match Car Racetrack
- Ride Your Bike to School



Week #2 June 20-June 24

## MAGICAL MATER MYSTERY TOUR

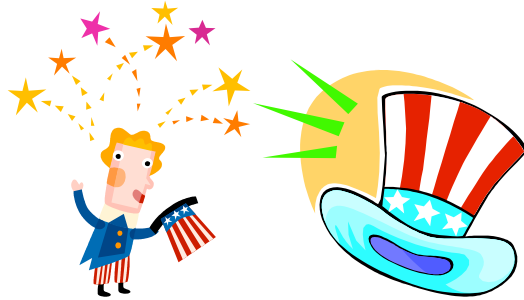
- Magic Show
- Mystery Guest Reader
- I SPY Game



Week #3 June 27-July 1

## SARGE SERVES THE U.S.A

- USA Neighborhood Parade
- Flags, Floats, Hot Dogs and Apple Pie!
- Pie Eating Contest

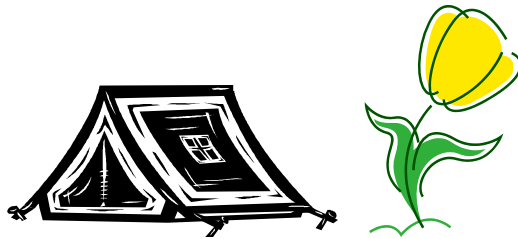


**Week #4 July 5-July 8**  
**CHICK HICKS CAMPING IN THE STICKS**

-Camp out in Anderson Hall

-S'Mores

-Outdoor Gardening Adventures



**Week #5 July 11-July 15**

**MCMISSILE'S MUSIC MANIA**

- American Summer Camp Idol Season 2!

-International Dance Contest

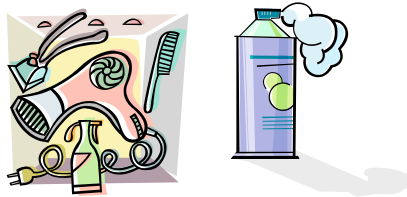
-Make your Own Instruments



**Week #6 July 18-July 22**

**SALLY'S SILLY SALON**

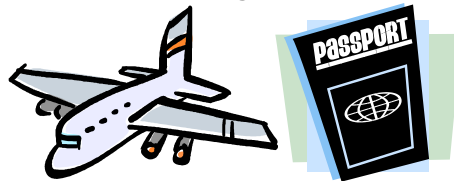
- Silly Hair Contest
- Miss Dawn's Hair Do's
- Shaving Cream Creations



**Week #7 July 25-July 29**

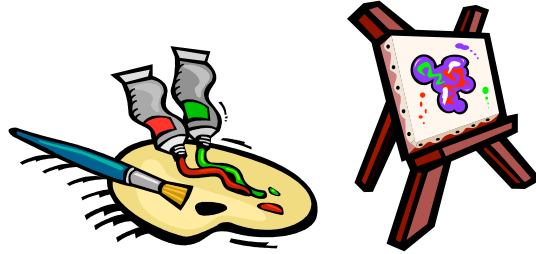
**FLO'S INTERNATIONAL FLIGHT**

- Make your Own Passport
- Classroom Travel Around the World!
- Visit from Flight Attendant



**Week #8 August 1-August 5**  
**RAMONE'S SCHOOL OF ART**

- Making Masterpieces
- Finger and Feet Painting
- Art Gallery Sale



**Week #9 August 8-August 12**

**CARWASH WATER WEEK**

- Wear Your Bathing Suits to School
- Christie's Car Wash and Auto Shop
- Professor Z's Wacky Water Experiments



Day Care Hours  
7:30 A.M. - 5:30 P.M.  
Part Time Care  
7:30 A.M. - 12:30 P.M.  
1:00 P.M. - 5:30 P.M.  
1-847-825-4568  
Fax 1-847-825-4320



Preschool Hours  
9:00 A.M. - 11:30 A.M.  
Lunch 12:00 to 12:30 P.M.  
1:00 P.M. - 3:30 P.M.

## Christie's Carousel of Learning Summer Program 2011

\*\*Choose any or all nine weeks, full or part time. Ages 2-9\*\*

**Week #1: June 13<sup>th</sup>-17<sup>th</sup>**  
MCQUEEN MATCH CAR  
RACING

**Week #4: July 5<sup>th</sup>-8<sup>th</sup>**  
CHICK HICKS CAMPING IN  
THE STICKS

**Week #7: July 25<sup>th</sup>-29<sup>TH</sup>**  
FLO'S INTERNATIONAL  
FLIGHT

**Week #2: June 20<sup>th</sup>-24<sup>th</sup>**  
MAGICAL MATER MYSTERY  
TOUR

**Week #5: July 11<sup>th</sup>-15<sup>th</sup>**  
MCMISSILE'S MUSIC  
MANIA

**Week #8: August 1<sup>st</sup>-5<sup>th</sup>**  
RAMONE'S SCHOOL OF ART

**Week #3: June 27<sup>th</sup>-July 1<sup>st</sup>**  
SARGE SERVES THE USA

**Week #6: July 18<sup>th</sup>-22<sup>nd</sup>**  
SALLY'S SILLY SALON

**Week #9: August 8<sup>th</sup>-12<sup>th</sup>**  
CARWASH WATER WEEK

### Weekly Tuition

<b>Program # 1</b>	<b>Program # 2</b>	<b>Program # 3</b>
7:30 A.M.-5:30 P.M. <i>FULL DAY</i>	7:30 A.M.-12:30 P. M. <i>MORNING PART TIME</i>	9:00A.M.-12:30P.M. <i>MORNING PART TIME</i>
Two Snacks & Lunch	Snack & Lunch	Snack & Lunch
Five Day- \$256.00 Weekly	Five Day- \$127.00 Weekly	Five Day- \$107.00 Weekly
Four Day- \$205.00 Weekly	Four Day- \$115.00 Weekly	Four Day- \$95.00 Weekly
Three Day- \$154.00 Weekly	Three Day- \$105.00 Weekly	Three Day- \$86.00 Weekly
Two Day- \$103.00 Weekly	Two Day- \$86.00 Weekly	Two Day- \$67.00 Weekly
<b>Program # 4</b>	<b>Program # 5</b>	<b>Program # 6</b>
9:00 A.M.-11:30 A.M. <i>MORNING PART TIME</i>	1:00 P.M.-3:30 P.M. <i>AFTERNOON PART TIME</i>	1:00 P.M.-5:30 P.M. <i>AFTERNOON PART TIME</i>
Snack	Snack	Snack
Five Day- \$78.00 Weekly	Five Day- \$78.00 Weekly	Five Day- \$110.00 Weekly
Four Day- \$72.00 Weekly	Four Day- \$72.00 Weekly	Four Day- \$99.00 Weekly
Three Day- \$ 64.00 Weekly	Three Day- \$64.00 Weekly	Three Day- \$88.00 Weekly
Two Day- \$51.00 Weekly	Two Day- \$51.00 Weekly	Two Day- \$69.00 Weekly

Fees are subject to change in accordance with rising costs. A non-refundable registration fee of \$30.00 must accompany the summer application. Expenses incurred in operating the school are based on anticipated income. The school must meet its obligations even though individual students are absent or on vacation. As a result, the school cannot adjust tuition fees for absenteeism, vacations, or holidays.

## CHRISTIE'S CAROUSEL OF LEARNING

<b>SCHOOL CALENDAR 2011-2012</b>		<b>* OPEN YEAR ROUND *</b>
Monday	August 15, 2011	First Day of School
Monday	September 5, 2011	Labor Day - <b>NO SCHOOL</b>
Thursday	September 22, 2011	<b>SCHOOL FIELD TRIP</b>
Friday	September 23, 2011	Church Closing/ <b>NO SCHOOL</b>
Thursday	September 29, 2011	Church Closing/ <b>NO SCHOOL</b>
Friday	September 30, 2011	<b>SCHOOL FIELD TRIP</b>
Thursday & Friday	October 27-28, 2011	Halloween Costume Parties
	November	THANKSGIVING PROGRAM
Thursday & Friday	November 24 & 25, 2011	Thanksgiving Holiday- <b>NO SCHOOL</b>
	December	CHRISTMAS PROGRAM
Monday	December 26 , 2011	<b>NO SCHOOL</b> for Holiday
Monday	January 2, 2011	<b>NO SCHOOL</b> for Holiday
Tuesday	January 10, 2012	REGISTRATION-Summer/Fall 2012-2013
Wednesday	January 11, 2012	Public Registration-Summer/Fall 2012-2013
	February 2012	Valentine's Day Parties
	March 2012	SPRING PROGRAM
	April 2012	Easter Egg Hunt & Parties
	April/May 2012	Grandparents Week
Thursday	April 26, 2012	Church Closing/ <b>NO SCHOOL</b>
Friday	April, 27, 2012	<b>SCHOOL FIELD TRIP</b>
Thursday	May 3, 2012	<b>SCHOOL FIELD TRIP</b>
Friday	May 4, 2012	Church Closing/ <b>NO SCHOOL</b>
Monday	May 28, 2012	<b>NO SCHOOL</b> -Memorial Day
Friday	June 8, 2012	Last Day of 2011-2012 School Year
Monday	June 11, 2012	Summer Day Camp Begins

\*All dates subject to change\*

# CHRISTIE'S CAROUSEL OF LEARNING FALL/SPRING SPECIAL EVENTS

Dear Parents,

Listed below are our special events and programs for the 2010/2011 school year. You will find that along with our daily curriculum schedule, we also have many special events that add an extra spark to our school year.

## MONDAY, AUGUST 15<sup>TH</sup> thru FRIDAY, AUGUST 19<sup>TH</sup>

This is our first week of school!!! Our daily curriculum consists of a story, music lesson, craft, and activity all centered on a weekly theme. We also have daily large motor activities that take place in our gym or outside on the playground.

## SEPTEMBER/OCTOBER CHURCH CLOSING

The Park Ridge Presbyterian Church is the location for the Greater Chicago Great Banquet which takes place four weekends of the year. Therefore, the church is closed to the school on those days. Please refer to our school calendar for all school closings.

## OCTOBER FIELD TRIP TO THE PUMPKIN FARM

Our field trip to the pumpkin farm is open to all of our enrolled students and typically runs from 9:00a.m.-2:00 p.m. We will be taking a bus to get to the farm. More details to follow.

## HALLOWEEN TRUNK OR TREAT COSTUME PARTIES

On Thursday, October 27<sup>th</sup> & Friday, October 28<sup>th</sup> we will have our Halloween Costume Parties. We will parade out to the parking lot for Trunk or Treat to show off our costumes! (If your child doesn't attend either of these days, their party time will be highlighted in your October Newsletter.)

## PICTURE DAYS

In the first part of November the children will have their class & individual composite pictures taken. More details to follow.

## THANKSGIVING PROGRAM

In November we will be having our annual Thanksgiving Program. This is a special program that the children dress up in costumes for! After the show is over, all families are welcome to join us for a special Thanksgiving dinner. Specific dates and details will be posted in our October Newsletter.

## CHRISTMAS PROGRAM

In December we will be having our annual Christmas Program. For this program, the children will dress in their Sunday best and sing a collection of Christmas songs. When the show is over, the children will be able to visit with Santa and even receive a special gift from him!

### **REGISTRATION**

Everyone enrolled in our school will have the opportunity to register for the 2012-2013 Summer and Fall programs on TUESDAY, JANUARY 10<sup>TH</sup>. PUBLIC registration will take place the following day, WEDNESDAY, JANUARY 11<sup>TH</sup>. More details to follow.

### **VALENTINE'S DAY PARTIES**

In the month of February we will be having our Valentine's Day parties! These parties include exchanging valentines and fun Valentine's Day activities. \*Please make sure that any treats you bring are STORE BOUGHT and NUT FREE.

### **SPRING PROGRAM**

In March we will be having our annual Spring Program. This is another fun and exciting program that has the children in costumes once again! Specific dates and details will follow in our monthly newsletters.

### **EASTER EGG HUNT AND PARTY**

In the month of April we will be having our Easter parties. These parties consist of Easter games and activities, an Easter egg hunt, and a special visit from the Easter Bunny!

### **APRIL/MAY CHURCH CLOSING**

The Park Ridge Presbyterian Church is the location for the Greater Chicago Great Banquet which takes place four weekends of the year. Therefore, the church is closed to the school on those days.

Please refer to our school calendar for all school closings.

### **GRANDPARENTS WEEK -IN APRIL/MAY**

Each child will be given the opportunity to share a pre-school experience with his or her Grandparent, Parent, or someone they are close to. More details to follow.

### **PARENT/TEACHER CONFERENCES FOR THE PRE-K 4 & 5-YEAR OLDS**

Our parent/teacher conferences will take place in the spring. There will be more details to follow on times and sign-up.

### **GRADUATION FROM 6:00-7:30 P.M.**

All the children going into Kindergarten will participate in graduation and dress in a cap and gown. Each child will receive their diploma and sing a few special songs.

### **JUNE: END OF THE YEAR ICE CREAM SOCIAL**

Our annual ice cream social is held to celebrate another great school year, and to kick off the start of the summer! Specific dates and details will follow in our monthly newsletters.

**\*DATES SUBJECT TO CHANGE\***

## Christie's Carousel of Learning Daily Schedule

\*All children wash their hands before entering their classroom

### **7:30am-8:45am**

-Child must be signed in

-Mixed age groups from

7:30am-8:45am

-8:45: move to assigned classroom

-Washroom when needed

### **8:45am-9:00am**

-Drop off with the greeter

-Enter the classroom, wash hands, free play

### **9:00am-11:30am**

-Free play within the classroom

-Large Motor time in gym or on playground

-Snack time

-Washroom when needed

-Activities by theme:

-Story Time

-Circle/Lesson Time

-Craft

-Classroom Music

-Once a week: extra special music class with Miss Carol

-Science/Math Activity

### **11:30am-12:00pm**

-Free play within classroom

-Washroom when needed

### **12:00pm-12:30pm-LUNCH**

### **12:30pm-1:00pm**

-7:30-5:30 enrolled children prepare for nap time

### **1:00pm-3:30pm**

-P.M. preschool follows same schedule as 9:00am-11:30am

### **3:30pm-5:30pm**

-Snack/washroom time  
playground

- Large Motor time in gym or on  
playground

- Dramatic play activities
- Story Time

- Daily sports and games

## Christie's Carousel of Learning Program Curriculum

Children are placed in classrooms according to their age as of September 1<sup>st</sup>. Teachers observe through daily assessments. If a child has met the goals listed for their age, they will be challenged and provided with additional developmentally appropriate activities.

### 2/3 Year Olds:

#### Language:

- Recognizes and identifies common objects and pictures
- Uses pronouns

#### Cognitive:

- Sorts five objects by color
- Plays make-believe with dolls, stuffed animals and people

#### Social/Emotional:

- Expresses a wide range of emotion
- Separates easily from parents

#### Large Motor:

- Walks up stairs with support, alternating feet
- Pedals a bike/tricycle

#### Small Motor:

- Builds a tower of more than six blocks
- Makes vertical, horizontal, and circular strokes with a pencil, crayon or

brush

### 3/4 Year Olds:

#### Language:

- Understands the concepts of, "same," and, "different."
- Asks questions with, "What," "Who," "Where," and "Why."

#### Cognitive:

- Follows three-part commands
- Recalls parts of a story

#### Social/Emotional:

- Cooperates/plays with other children
- More independent/dresses and undresses self

#### Large Motor:

- Hops and stands on one foot up to five seconds
- Kicks ball forward and throws ball overhand

**Small Motor:**

- Draws a person with 2-4 body parts
- Draws circles and squares and uses scissors

**4/5 Year Olds: Pre-K**

**Language:**

- Says full name and knows address and phone number
- Uses future tense and tells longer stories

**Cognitive:**

- Can count ten or more objects
- Better understand the concept of time

**Social/Emotional:**

- Shows more independence
- Likes to sing, dance, and act

**Large Motor:**

- Hops, somersaults, swings and climbs
- Stand on one foot for ten seconds or longer

**Small Motor:**

- Prints letters in their name, along with others
- Copies triangle and other geometric patterns

Pre-K assessments are completed for each child twice a year.

Pre-K parent/teachers conferences are held in the spring.

**Extended Kindergarten Day:**

**Language:**

- Can tell a story with a beginning, middle, and end
- Hears and repeats sounds in sequence

**Cognitive:**

- Write all letters uppercase and lowercase
- Can copy sentences from the blackboard onto paper

**Social/Emotional:**

- Is able to follow the rules and schedule of the classroom
- Can express feelings/emotions verbally

**Large Motor:**

- Walks and balances on balance beam
- Can run, jump, skip, and gallop easily

**Small Motor:**

etc.

-Demonstrates fine motor skills of threading, cutting with scissors, gluing,

-Can fasten buttons and zippers

**These are examples of the goals that we set for each age group.**

# CHRISTIE'S CAROUSEL OF LEARNING

## FALL TUITION FEE SCHEDULE 2011-2012

	<u>FULL DAY</u> [4 Week Fee]			
	<u>5 DAY</u>	<u>4 DAY</u>	<u>3 DAY</u>	<u>2 DAY</u>
7:30a.m. -5:30p.m. 10 hours with Lunch	1022.00	818.00	613.00	409.00

	<u>MORNING PART TIME</u> [4 Week Fee]			
	<u>5 DAY</u>	<u>4 DAY</u>	<u>3 DAY</u>	<u>2 DAY</u>
7:30a.m. -12:30p.m. 5 hours with lunch	508.00	460.00	418.00	344.00

9:00a.m. -12:30p.m. 3 ½ hours with lunch	425.00	379.00	344.00	266.00
---	--------	--------	--------	--------

9:00a.m. -11:30a.m. 2 ½ hours no lunch	312.00	287.00	255.00	203.00
---	--------	--------	--------	--------

	<u>AFTERNOON PART TIME</u> [4 Week Fee]			
	<u>5 DAY</u>	<u>4 DAY</u>	<u>3 DAY</u>	<u>2 DAY</u>
1:00p.m. -3:30p.m. 2 ½ hours	312.00	287.00	255.00	203.00

1:00p.m. -5:30p.m. 4 ½ hours	441.00	397.00	350.00	273.00
---------------------------------	--------	--------	--------	--------

Fees are subject to change in accordance with rising costs. A non-refundable registration fee of \$60.00 must accompany this application. Expenses incurred in operating the school are based on anticipated income. The school must meet its obligations even though individual students are absent or on vacation from time to time. As a result, the school cannot adjust tuition fees for absenteeism and or holidays.

*Day Care Hours*  
7:30 A.M. - 5:30 P.M.

*Part Time Care*  
7:30 A.M. - 12:30 P.M.  
1:00 P.M. - 5:30 P.M.

1-847-825-4568  
Fax 1-847-825-4320



*Preschool Hours*  
9:00 A.M. - 11:30 A.M.  
Lunch 12:00 to 12:30 P.M.  
1:00 P.M. - 3:30 P.M.

## **OUR KINDERGARTEN ENRICHMENT PROGRAM**

If you are looking for your child to experience an extended kindergarten day, then this is the program for your child.

We offer 2 day or 3 day or 4 day or 5 day extended hours from 11:30 a.m. - 3:45p.m. or 11:30 until 5:30p.m.

We walk to and back from Washington Elementary School to pick up the children who will attend this great program.

All children from any other kindergarten program are welcome to join this fun filled class. Many families car pool to our school.

This program includes a lunch prepared at the school and an afternoon snack.

This classroom will offer a variety of centers conducive to active learning:

The Literacy Center offers a variety of books and journals for reading and writing. The Science Center includes activities and materials for experimentation. The Art Center has a wide array of items for promoting creativity. The Math Center includes number games, charts, and graphs. In addition to the centers, the children have the opportunity to participate in Author Studies, Science Experiments, and Cooking Classes throughout the year.

If you are interested and would like to know more, please call and we will help answer any of your questions.

# Christie's Carousel of Learning



Day Care Hours  
7:30 a.m. – 5:30 p.m.

Part Time Care  
7:30 a.m. – 12:30 p.m.  
1:00 p.m. – 5:30 p.m.

Preschool Hours  
9:00 a.m. -11:30 a.m.  
Lunch 12:00 to 12:30 p.m.  
1:00 p.m. – 3:30 p.m.

1-847-825-4568

## KINDERGARTEN ENRICHMENT PROGRAM

### Learning @ Play! Your Kindergartner's Extended Day

WE ARE OFFERING A KINDERGARTEN LEARNING @ PLAY ENRICHED EXTENDED DAY! The program features a unique play based learning environment with emphasis on Language, Physical Education, Computers, and Theatrical Performance. Plus Crafts, Music, and Math & Science Exploration. You provide the transportation & we'll provide the child care with a hot lunch & snack!

CHOOSE YOUR DAYS! TWO DAY MINIMUM REQUIRED

MONDAY – FRIDAY

AFTERNOON EXTENDED DAY [4 Week Fee]

11:30a.m. – 3:45p.m.	<u>5 DAY</u>	<u>4 DAY</u>	<u>3</u>
DAY	2 DAY		

4 hours with lunch	\$449.00	\$400.00	\$362.00	\$280.00
--------------------	----------	----------	----------	----------

11:30a.m. – 5:30p.m.	<u>5 DAY</u>	<u>4 DAY</u>	<u>3</u>
DAY	2 DAY		

6 hours with lunch	\$563.00	\$510.00	\$464.00	\$380.00
--------------------	----------	----------	----------	----------

A non-refundable registration fee of \$60.00 must accompany registration form.

## Christie's Carousel Lunch Menu

<p><b>Monday:</b>            Chicken Nuggets            Vegetable Soup            Pickle Slice            Chilled Pears            Milk</p>	<p><b>Monday:</b>            Hot Dogs on a Bun            Baked Beans            Carrot Strips            Yogurt            Milk</p>	<p><b>Monday:</b>            Grilled Cheese Sandwich            Chicken Noodle Soup            Wheat Thins            Apple Sauce            Milk</p>
<p><b>Tuesday:</b>            Beef Ravoli            Buttered Bread            Corn            Cucumber Slice            Fruit Cocktail            Milk</p>	<p><b>Tuesday:</b>            Chicken Casserole            Buttered Bread            Green Beans            Peaches            Jello w/ Fruit            Milk</p>	<p><b>Tuesday:</b>            Turkey Casserole            Buttered Bread            Peas            Cranberry Sauce            Graham Crackers            Milk</p>
<p><b>Wednesday:</b>            Sloppy Joes            Pasta Salad            Wheat Thins            Celery Strips            Pineapple            Milk</p>	<p><b>Wednesday:</b>            Beef &amp; Noodle Casserole            Buttered Bread            Corn            Apple Sauce            Fresh Fruit            Milk</p>	<p><b>Wednesday:</b>            Meat Loaf            Buttered Bread            Rice            Cooked Carrots            Jello w/ Fruit            Milk</p>
<p><b>Thursday:</b>            Baked Ham            Mashed Potatoes            Buttered Bread            Cooked Carrots            Peaches            Milk</p>	<p><b>Thursday:</b>            Roast Turkey            Mashed Potatoes            Buttered Bread            Celery Strips            Peas &amp; Pears            Milk</p>	<p><b>Thursday:</b>            Spaghetti &amp; Meat Sauce            Lettuce Salad            Buttered Bread            Green Beans            Peaches            Milk</p>
<p><b>Friday:</b>            Porcupine Meatballs            Rice            Buttered Bread            Green Beans            Apple Sauce            Milk</p>	<p><b>Friday:</b>            Macaroni &amp; Cheese            Fish Sticks            Buttered Bread            Green Beans            Graham Crackers            Milk</p>	<p><b>Friday:</b>            Tuna Noodle Casserole            Buttered Bread            Corn            Apple Sauce            Fresh Fruit            Milk</p>